

## 2500 SERIES ELECTRIC BASEBOARD HEATER



### IDEAL SPACES

- Bedrooms
- Living/Family Rooms
- Kitchens
- Bathrooms
- Basements
- Offices
- Conference Rooms
- Hallways
- Lobbies
- Waiting Rooms

### COLORS

- Northern White
- Navajo White

### DIMENSIONS



- Ideal for basic, zoned Primary/Secondary heating
- Low Profile perfect for limited wall space
- Convection heat minimizes air flow, reducing flow of bacteria and dust
- Instant heat at call of thermostat
- Durable, textured, powder coat finish retains attractive appearance with all interior decors
- Chimney fin element designed for maximum air circulation
- Air flow directed away from walls to help prevent wall streaking
- Lead wires and knockouts allow quick field connection from either end
- Pre-notched marks for mounting guide
- Built-in cable clamp in both large wiring compartments
- UL-listed for installation on wall at floor level with wall-to-wall carpeting
- High temperature safety limit for added protection in case of airflow blockage



## 2500 SERIES ELECTRIC BASEBOARD HEATER

### MODELS & SPECIFICATIONS

CATALOG NO.	UPC	VOLTS	WATTS	AMPS	LENGTH (IN)	SHIP WT. (LBS)	
2542NW	0 98319 73002 2	240/208	400/300	1.7/1.5	24"	5.2	
25426NW	0 98319 73006 0		500/376	2.1/1.9	30"	6.3	
2543NW	0 98319 73010 7		750/564	3.2/2.8	36"	7.5	
2544NW	0 98319 73014 5		1000/752	4.2/3.7	48"	10	
2545NW	0 98319 73018 3		1250/940	5.2/4.6	60"	11.5	
2546NW	0 98319 73022 0		1500/1128	6.3/5.5	72"	14	
2548NW	0 98319 73025 1		2000/1504	8.4/7.3	96"	18.5	
25408NW	0 98319 72982 8		2500/1880	10.5/9.1	96"	18.5	
2512NW	0 98319 73000 8		120	400	3.4	24"	5.2
25126NW	0 98319 73004 6			500	4.2	30"	6.3
2513NW	0 98319 73008 4	750		6.3	36"	7.5	
2514NW	0 98319 73012 1	1000		8.4	48"	10	
2515NW	0 98319 73016 9	1250		10.5	60"	11.5	
2516NW	0 98319 73020 6	1500		12.6	72"	14	
2502NW	0 98319 73001 5	208		400	2.0	24"	5.2
25026NW	0 98319 73005 3			500	2.4	30"	6.3
2503NW	0 98319 73009 1			750	3.6	36"	7.5
2504NW	0 98319 73013 8			1000	4.8	48"	10
2505NW	0 98319 73017 6		1250	6.0	60"	11.5	
2506NW	0 98319 73002 1		1500	7.3	72"	14	
2508NW	0 98319 73024 4		2000	9.7	96"	18.5	
25008NW	0 98319 72981 1		2500	12.0	96"	18.5	
2572NW	0 98319 73003 9		277/240/208	400/300/225	1.5/1.3/1.1	24"	5.2
25726NW	0 98319 73007 7			500/376/282	1.8/1.6/1.4	30"	6.3
2573NW	0 98319 73011 4	750/564/423		2.7/2.4/2.1	36"	7.5	
2574NW	0 98319 73015 2	1000/752/564		3.7/3.2/2.8	48"	10	
2575NW	0 98319 73019 0	1250/940/705		4.6/4.0/3.4	60"	11.5	
2576NW	0 98319 73023 7	1500/1128/846		5.5/4.7/4.1	72"	14	
2578NW	0 98319 73026 8	2000/1504/1128		7.3/6.3/5.5	96"	18.5	
25708NW	0 98319 72983 5	2500/1880/1410		9.1/7.9/6.8	96"	18.5	

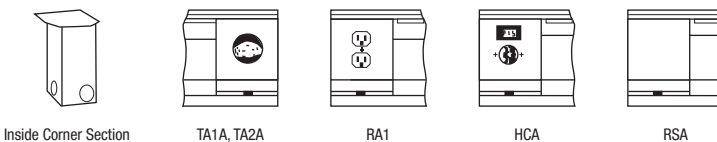
### CONTROLS & ACCESSORIES

CATALOG NO.	UPC	DESCRIPTION	SHIP WT. (LBS)
TA1AW	0 98319 73041 1	SP Thermostat, rated 22A @ 120-277V	1
TA1TPAW	0 98319 73042 8	Tamper-Resistant Version of TA1AW	1
TA2AW	0 98319 73043 5	DP Thermostat, rated 22A @ 120-277V	1
TA2TPAW	0 98319 73044 2	Tamper-Resistant Version of TA2AW	1
HCA2415/20W	0 98319 73046 6	240V Load Transfer Switch, 20A	1
HCA1215/20W	0 98319 73045 9	120V Load Transfer Switch, 20A	1
RSA1224	0 98319 71480 0	120V/24V Transformer Relay, 22A	1
RSA2024	0 98319 71485 5	208V/24V Transformer Relay, 22A	1
RSA2424	0 98319 71490 9	240V/24V Transformer Relay, 22A	1
RSA2724	0 98319 71495 4	277V/24V Transformer Relay, 19A	1
RA1W	0 98319 73047 3	120V Duplex Receptacle	1
DSW2W	0 98319 73049 7	Double-Pole Power On/Off Switch rated 20A @ 120-277V	1
PR24	0 98319 71367 4	Single-Pole Power Relay, 24V Control rated 30A @ 120-240V, 23A @ 277V	1
PR120	0 98319 71368 1	Same as PR24 except with 120V Control	1
ICANW	0 98319 73050 3	Inside Corner	1
RA1COMPW	0 98319 73048 0	Duplex Receptacle Cover only - carton of 10	1

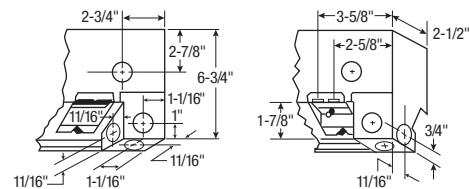
### FILLER AND BLANK SECTION

CATALOG NO.	UPC	DESCRIPTION	SHIP WT. (LBS)
FS12NW	0 98319 73150 0	1 ft. Filler Section	2
FS24NW	0 98319 73151 7	2 ft. Filler Section	4
FS36NW	0 98319 73152 4	3 ft. Filler Section	6
FS48NW	0 98319 73153 1	4 ft. Filler Section	8
FSJ2NW	73154 8	2 in. Joiner Strip	.5
QMKCBDA2NW	6 85360 05959 4	2.6 ft. Blank Section	4
QMKCBDA3NW	6 85360 05961 7	3 ft. Blank Section	5
QMKCBDA4NW	6 85360 05963 1	4 ft. Blank Section	7
QMKCBDA5NW	6 85360 05965 5	5 ft. Blank Section	9
QMKCBDA6NW	6 85360 05967 9	6 ft. Blank Section	11
QMKCBDA8NW	6 85360 05969 3	8 ft. Blank Section	14

NOTE: Unit and accessories represent Northern White finish. For Navajo White, remove N suffix to catalog number (ex. 2544W). For high-altitude baseboard heater (mounted above 7,500 ft.), add suffix "H" to catalog number. 8 ft. length baseboards must be ordered in multiples of two pieces for shipment.



Unit length varies with model. See Selection Chart



All knockouts are 7/8" diameter for 1/2" conduit